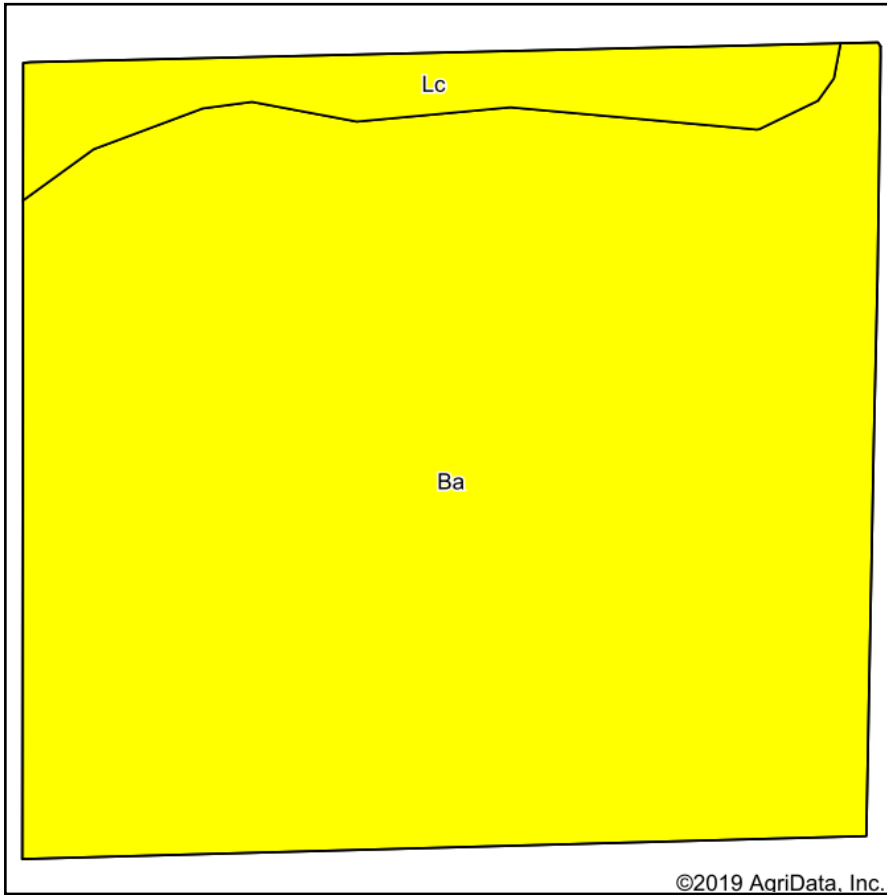
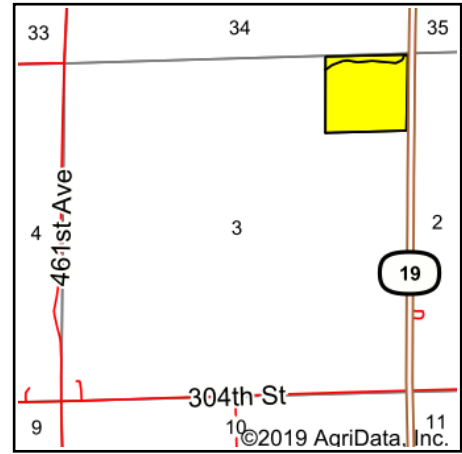


Soils Map



Soils data provided by USDA and NRCS.



State: **South Dakota**
 County: **Clay**
 Location: **3-94N-52W**
 Township: **Pleasant Valley**
 Acres: **32.89**
 Date: **8/21/2019**



Maps Provided By:



Area Symbol: SD027, Soil Area Version: 21						
Code	Soil Description	Acres	Percent of field	PI Legend	Non-Irr Class *c	Productivity Index
Ba	Baltic silty clay loam, 0 to 1 percent slopes	30.18	91.8%		IIIw	61
Lc	Lamo silty clay loam, 0 to 2 percent slopes, sandy substratum	2.71	8.2%		IIIw	69
Weighted Average						61.7

*c: Using Capabilities Class Dominant Condition Aggregation Method
 Soils data provided by USDA and NRCS.